

Quick Start Guide

The Source Reliance installation program allows you to set up the Source Reliance server and client application components on a computer. You use the installation program to configure computers in your environment for their intended purpose.

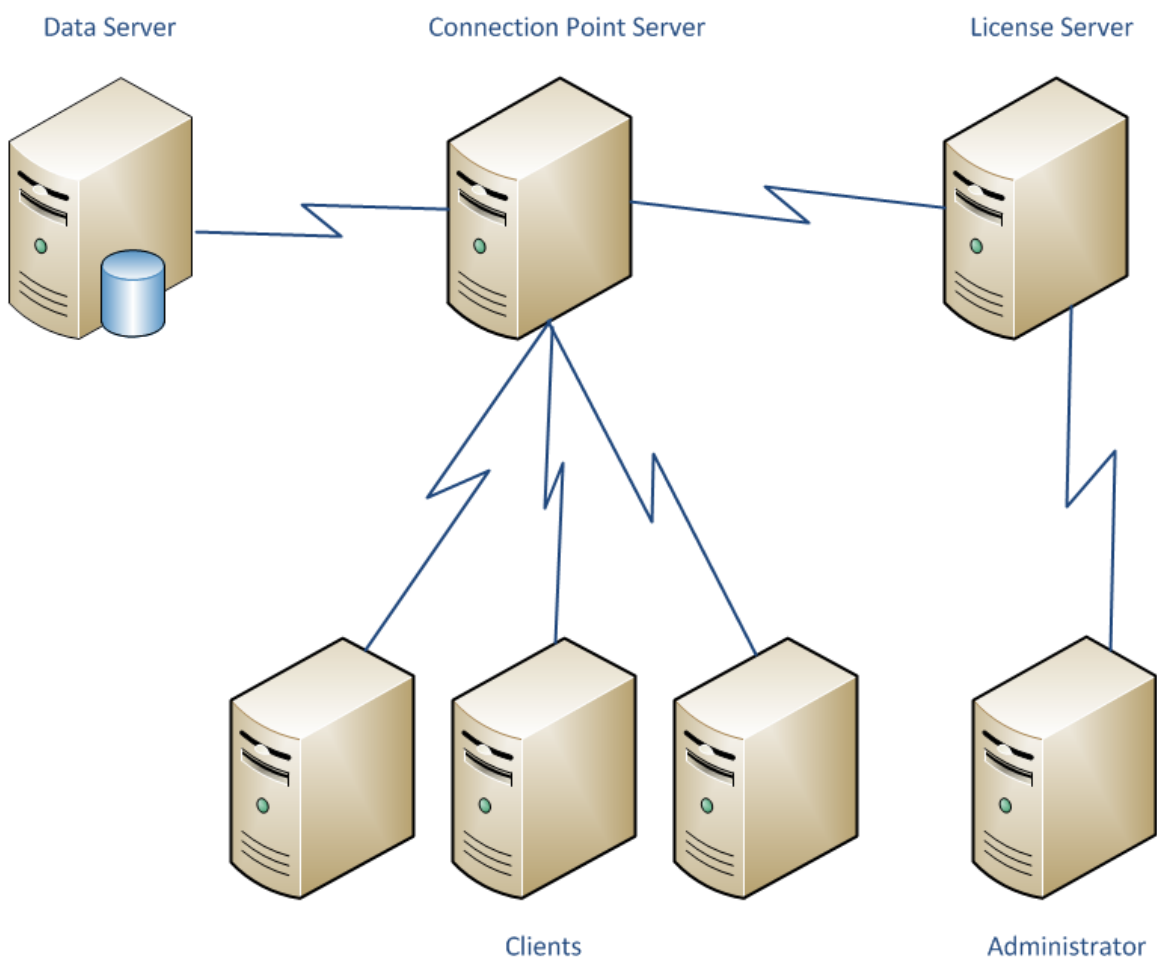
The Source Reliance Software Components

The Source Reliance system is comprised of five software components:

- three server components
- an administrator application
- an end user client application

The three servers run as Windows® services and do not have any user interface. The administrator application provides the user interface to administer the servers and databases in the system. The client application provides the user interface for the end users to do work in Source Reliance.

The following diagram shows how the components are related.



Throughout this document we refer to the License Server, Connection Point Server and Data Server software components as “servers” meaning they perform a server-side function in the Source Reliance system. Do not confuse this as meaning separately running server computers as these software components are simply Windows® services and can all be installed on a single computer, on separate computers, or in any combination. With the exception of the License Server, you can have a mixture of any of the other components installed on a single computer. The License Server can only be installed on one computer in the system.

The Software Component Responsibilities

Each of the software components has a specific responsibility.

License Server	Manages the license for a single license domain.
Connection Point Server	Manages the network connections between end user clients, Data Servers, and the License Server.
Data Server	Manages one or more databases.
Administrator Application	Allows you to configure and manage the Source Reliance system.
Client Application	The end user client application that allows you to do work in Source Reliance.

Summary of the Setup Process

There are three steps you will take to set up Source Reliance in your environment.

1. Install the server components

The Source Reliance installation program will install the server components, set up one database, and activate your Source Reliance license.

2. Run the Administrator application

You will run the Administrator application to set up users in the system, as well as set up databases as needed.

3. Install the Source Reliance™ Clients

You will install the Source Reliance™ Client application on each computer you wish to use Source Reliance. In order to log into the Source Reliance™ Client, you must have a user account set up in the system.

Installing Source Reliance Server Components

The Source Reliance installation is very straight forward. Once you have started the installation program, proceed with the step by step instructions below. In order to install the Source Reliance server components you must be logged into Windows® as an administrator. You will need to perform the Source Reliance installation on the computer that you want the Source Reliance™ License Server to reside on, and you will need to have an active internet connection to activate your license.



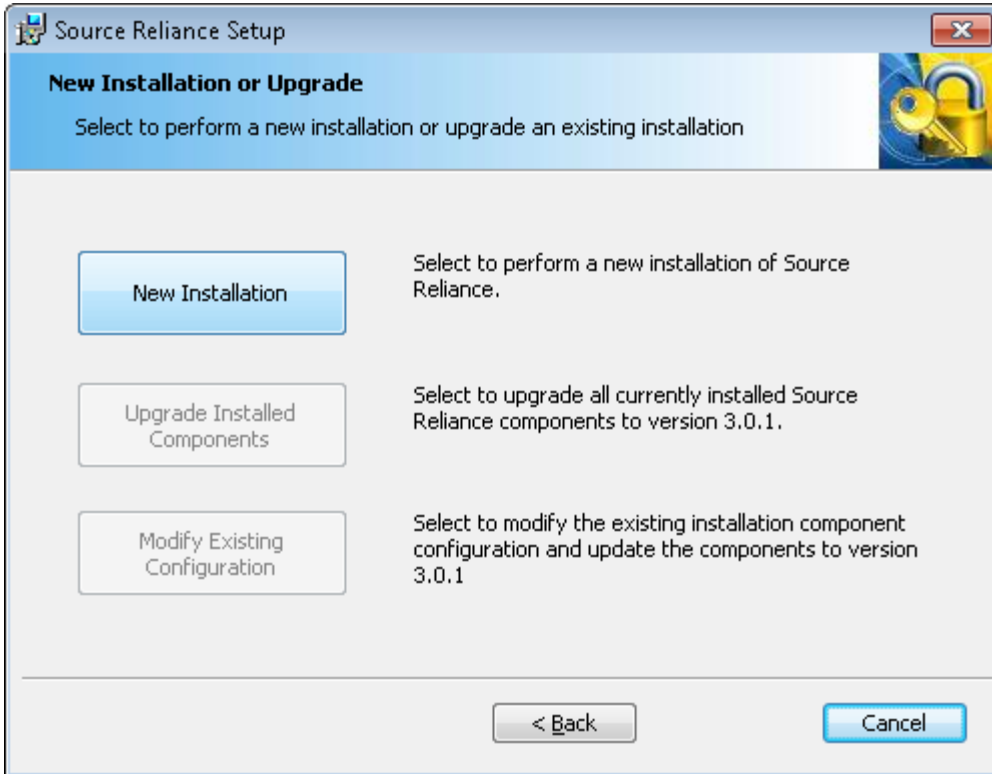
Please turn off any anti-virus software before performing the installation.



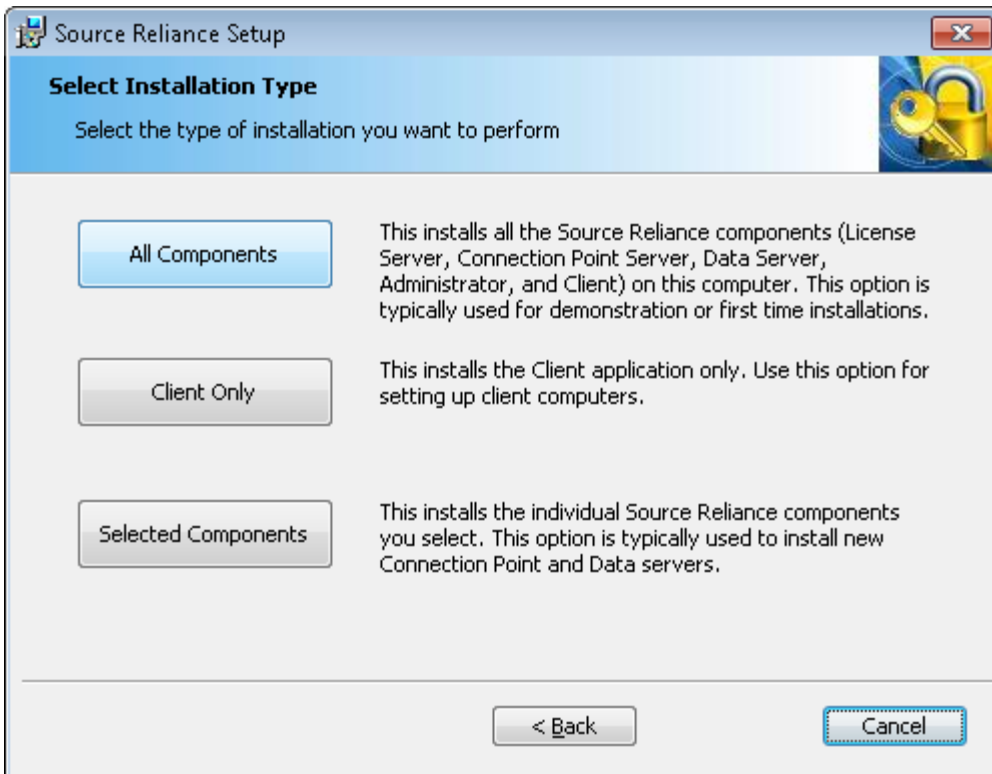
Note about User Account Control

If your Windows® computer has User Account Control (UAC) enabled you will not have sufficient rights to install the Source Reliance server components on your computer. You must turn off UAC to install Source Reliance and to perform Source Reliance administration tasks such as starting and stopping the server components. If you have UAC enabled and turn it off for the purposes of installing Source Reliance, you will need to reboot the computer before the new UAC settings take effect.

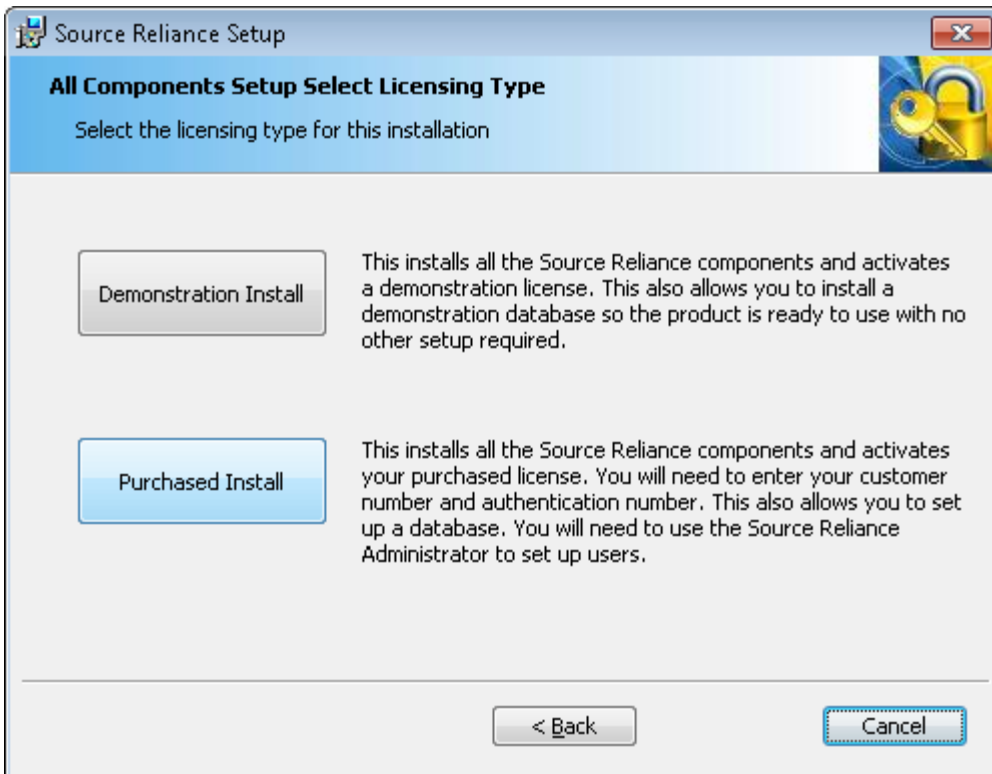
1. After accepting the End User License Agreement, select to perform a New Installation.



2. Select to install All Components. This will install all five of the software components on the local computer.



3. Select to perform a Purchased Install.

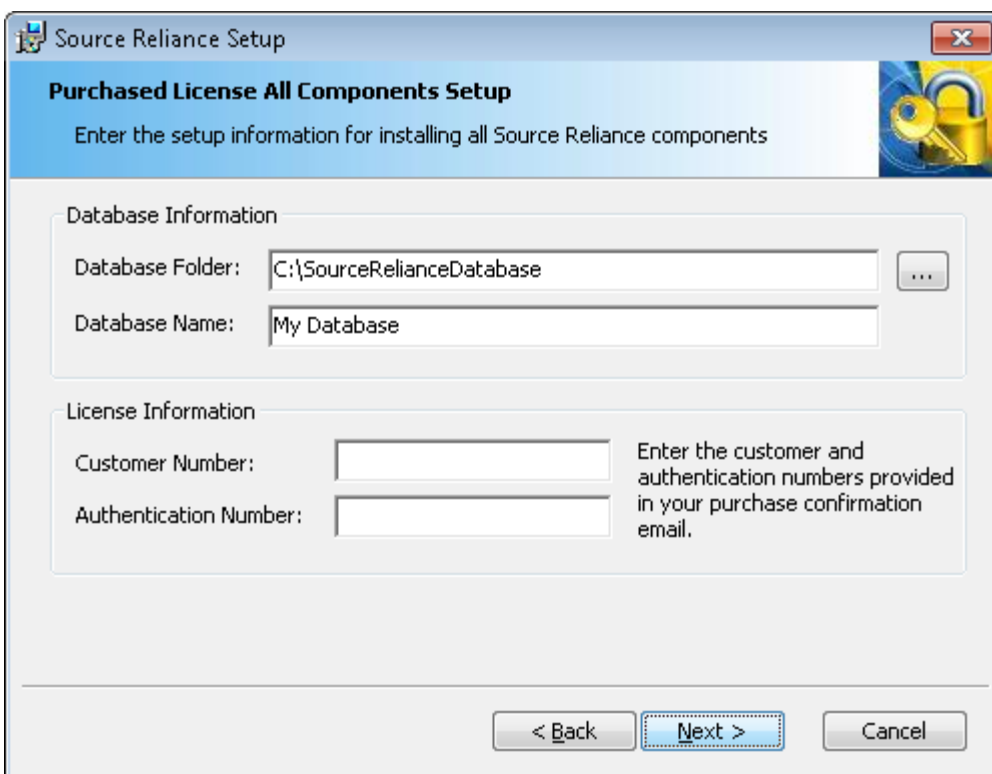


4. Specify the database and license information. Enter the path you would like the database files to be placed into. **The folder you specify for the database must be empty. If it does not exist it will be created for you.**

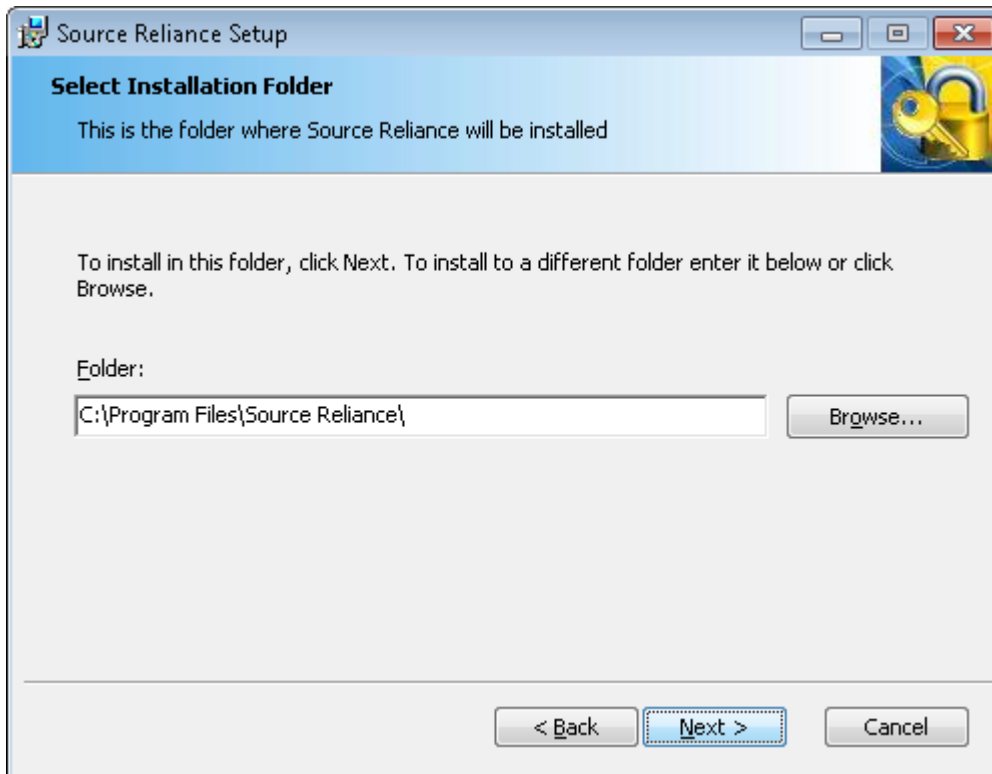
If you do not wish to create a database automatically during the installation, blank out the database folder and name fields. In this case you will need to log into the Source Reliance™ Administrator to create your databases.

Specify the customer number and authentication number found in your receipt e-mail you received when you purchased your license of Source Reliance.

Click on the Next button.



5. Specify the location you want to install Source Reliance into. This path is defaulted to the Program Files folder.



6. Click the Next button and then click Install.

The installation program will install Source Reliance, create the database in the path you specified (if you specified the database to create), and will automatically start the server components and activate your license. Once this setup processing has completed you will be ready to log into the Source Reliance™ Administrator application and set up your users.

Note about Shortcut Security

After you have completed the installation of Source Reliance, you may need to add your Windows® user in the Security tab in the properties for the Source Reliance Administrator shortcut on your desktop. If your user is not included in the Security tab for the shortcut, when you run the Source Reliance Administrator it will not have sufficient rights to start and stop the Source Reliance server components.

You can add your user to the security for the shortcut by right clicking on the shortcut and viewing the Properties dialog. Select the Security tab, and then click the Edit button and add your user to the security settings. After that, you must also go to the Compatibility tab on the shortcut properties and check the “Run this program as an administrator” checkbox in the Privilege Level settings.

Running the Administrator Application



The Administrator application is where you administer the server configuration, databases, users, and security for the system. You can run the Administrator application from the desktop icon that was installed.



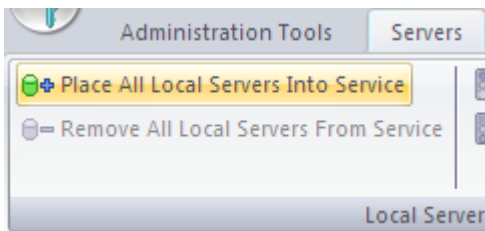
You will need to create user accounts for each of your users before they can log into the system using the Source Reliance™ Client.

Logging into the System

In order to administer the system the Administrator application must log into a running License Server. The All Components installation installs all the software components on the same computer, so the License Server must be running on the local computer.

When you start the Administrator application, the stoplight icon on the quick access toolbar will show a red light  indicating that one or more servers are currently running locally and can be stopped by pressing the red light button. If the green light  is shown or neither is active, that indicates that the servers are not running locally and you must start them in order to log in. If that is the case then start the local servers by selecting the Place All Local Servers Into Service command under the Servers ribbon menu.

Alternatively, you can press the  button on the quick access toolbar.



With the local servers running you can log into the system by pressing the login button




on the toolbar. You will be asked for the administrator user name and password. The default administrator user name is **admin**, and the default password is also **admin**.





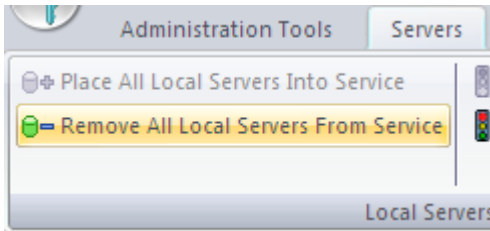
You should rename the default administrator account to something other than “admin”, and you should change the password also. Note that you can create as many administrator accounts as you wish using the Manage Administrators dialog. The administrator accounts do not occupy a user seat of the license.

Creating the User Accounts



To create the user accounts to allow your users to log into the Source Reliance™ Client, use the Manage Users dialog. You can access this dialog by pressing the Manage Users button  on the toolbar. Press F1 for help in the Manage Users dialog for more information about adding users.

Stopping the Servers


If you want to stop the servers simply click the red stoplight button  on the quick access toolbar. If you want to stop the servers and also unregister the services from the Microsoft Management Console click the Remove All Local Servers From Service command off the Servers ribbon menu. Alternatively, you can press the  button on the toolbar.



If you are currently logged into the running License Server you will be warned that you will be logged off if you stop the servers.

 Note that the green stoplight button  indicates that one or more locally installed servers has been placed into service (i.e. the service has been registered with the Microsoft Management Console) but is not currently running. Pressing the button will start the servers.

Refer to the in-product documentation for more information regarding the Administrator features.

 Refer to the Getting Started topic in the in-product documentation for the Source Reliance™ Administrator. This topic covers the setup process more in-depth and provides additional information about setting up the system for your particular needs.

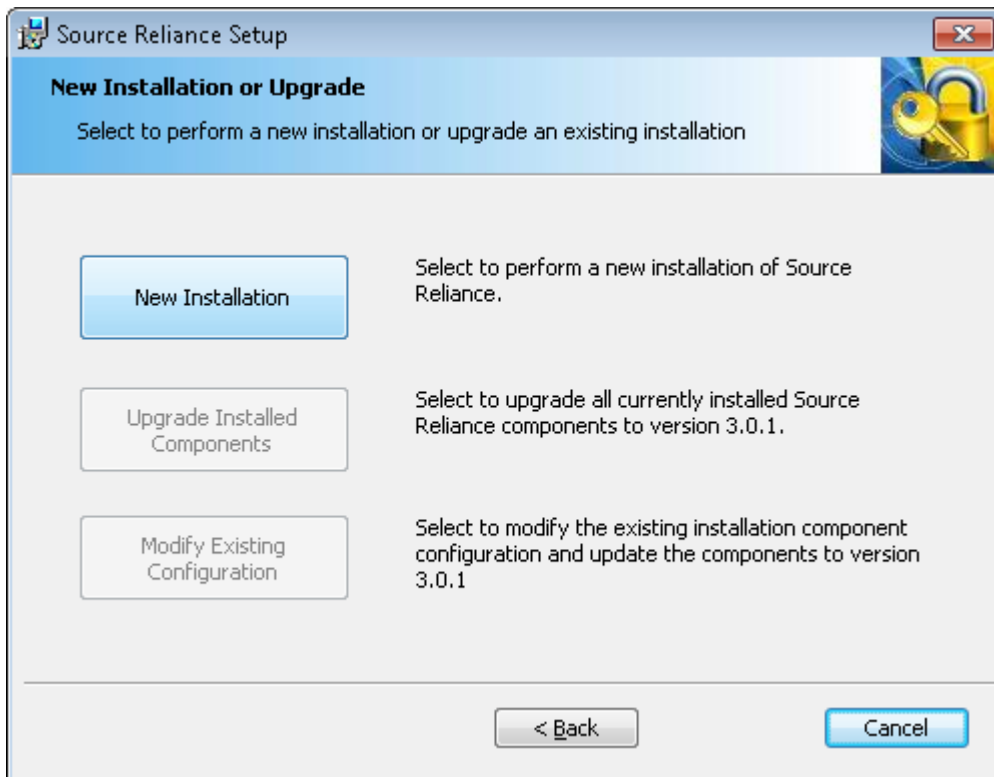
Installing the Client Applications

The Client application is where you do most of your work in Source Reliance. This is where you interact with the Source Reliance databases to manage your project’s source code and its supporting files.

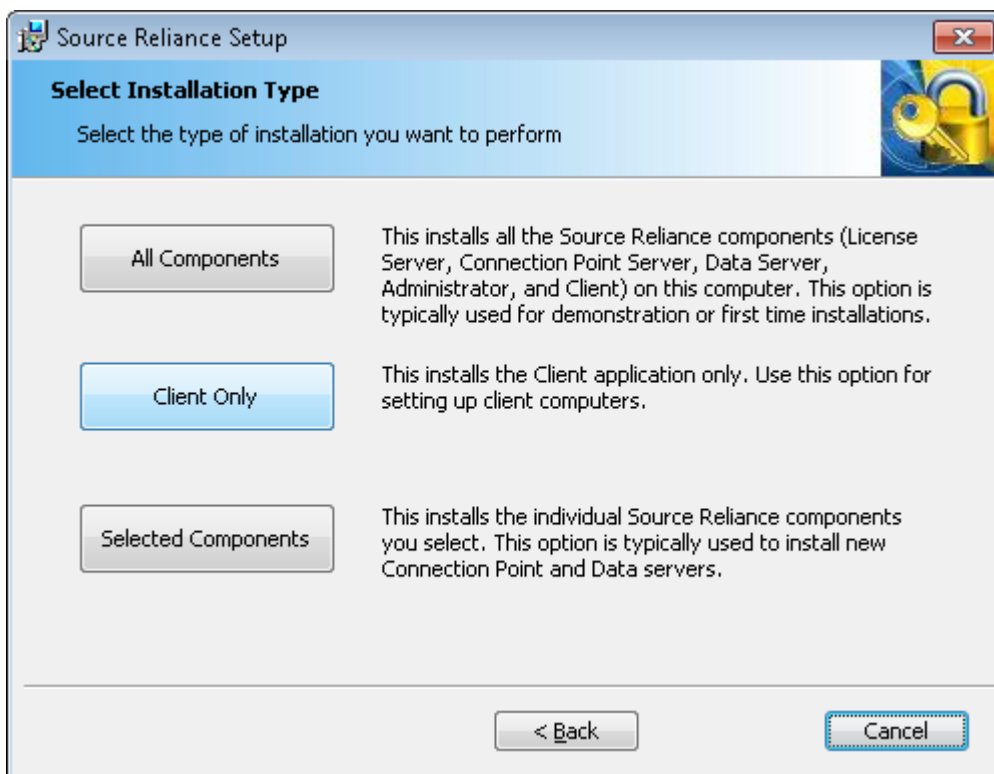
You will need to install the Source Reliance™ Client application on each computer that users will access the system from. You will do that using the Source Reliance installation program.

Run the Source Reliance installation program and follow these steps:

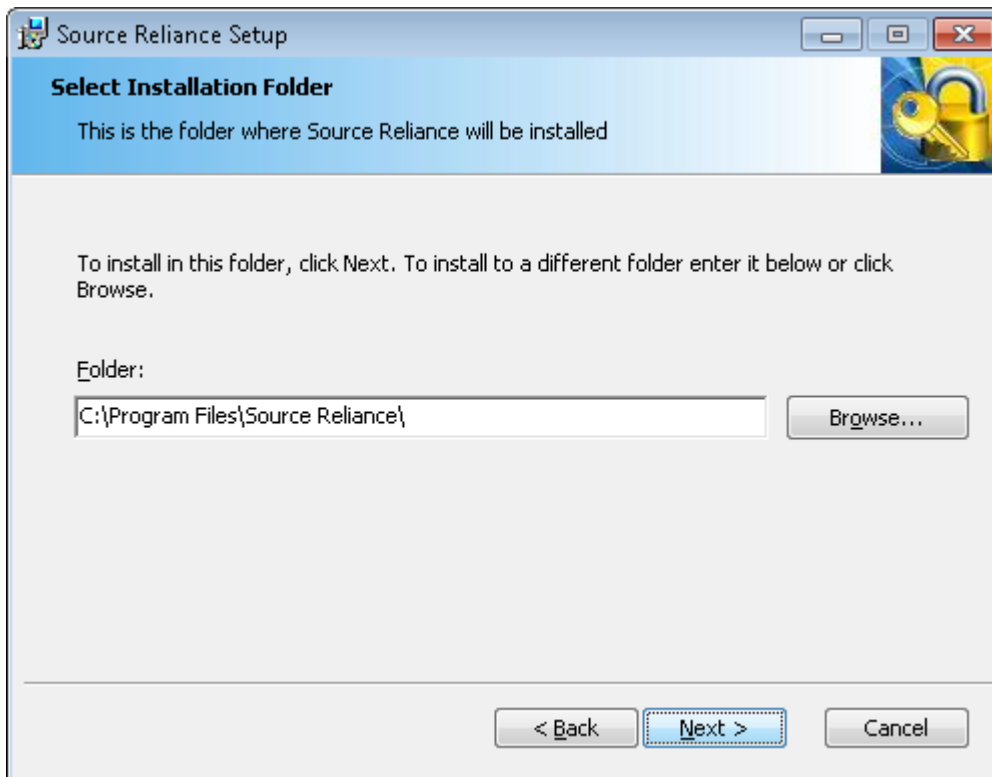
1. After accepting the End User License Agreement, select to perform a New Installation.



2. Select to install the Client only.



- Specify the location you want to install the Source Reliance™ Client into. This path is defaulted to the Program Files folder.



- Click the Next button and then click Install.

The installation program will install the Source Reliance™ Client application on the local computer. You will need to have a user account set up in order to log into the system.

Running the Client Application

You can run the Source Reliance™ Client application from the desktop icon that is installed. When you first run the Client application you will need to configure the network settings to point to a Connection Point Server.

Configuring Network Settings

When you first run the Source Reliance Client you will be asked if you want to configure the network settings. Press **Yes** to configure the settings.

In the Setup Network dialog you will need to enter the host name (or static IP address) of the Connection Point Server. If you have performed the standard server installation as outlined in this guide, this will be the computer that you performed that server installation on.

You will also be asked for the TCP port for the Connection Point Server. If the administrator has not changed the port from the default, simply accept the default value.

Press the OK button to save the network settings.

Logging In to the Client

When you run the Client application you will be asked for your user name and password. Enter the user login name and password that has been set up for you by your systems administrator.



Note that the user login name and the user display name are not the same thing. The login name is what is used as credentials to log into the system and it is not displayed anywhere in the system. The user display name is what is shown publicly for all database activity associated with the user. The login and display names are separate so knowledge of a user's login credentials is not made public. Normally you should make the login and display names different for a given user.

Refer to the in-product documentation for more information regarding the Client features.



Refer to the Getting Started topic in the in-product documentation for the Source Reliance™ Client. This topic covers the process of getting your data into Source Reliance, and how to begin using the Source Reliance features.